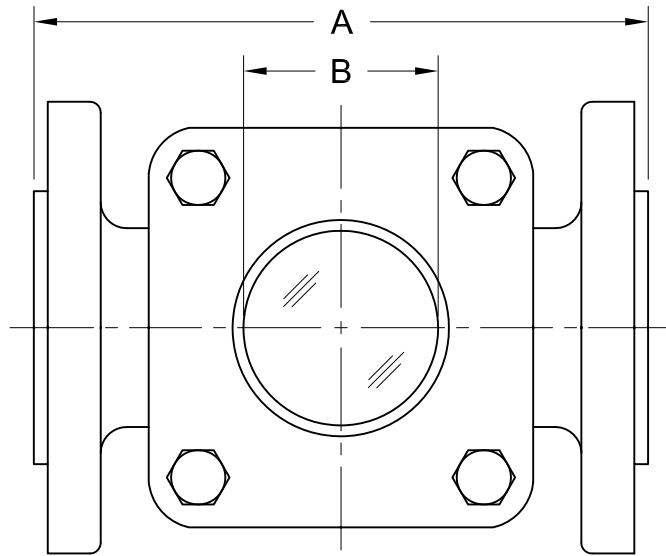


REVISIONS			
Rev.	Modification	Date	Done By
A	Amended Notes	8/5/2019	NPH
B	Updated Materials	10/10/2022	NPH

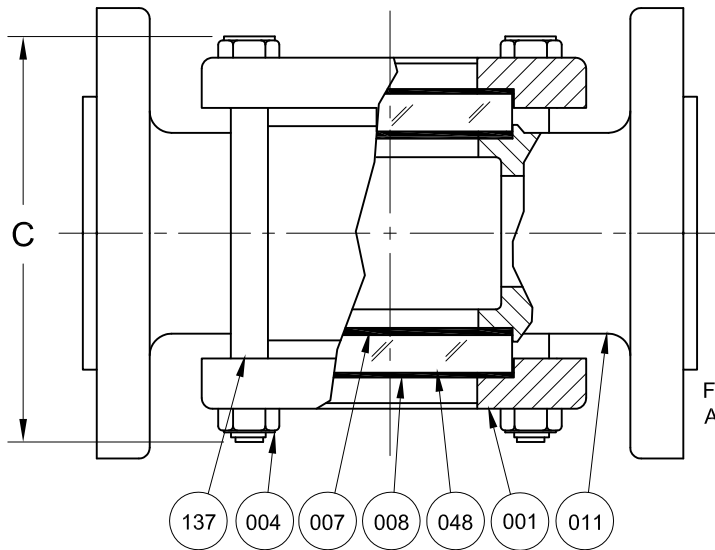


ASME Class 600 Service Press./Temp. Ratings		
*Limited to Gasket & Glass Material		
Temp. (°F)	Pressure (PSIG)	
	CS	316SS
-20 to 100	1480	1440
150	1420	1340
200	1360	1240
250	1335	1180
300	1310	1120
350	1285	1070
400	1265	1025
450	1235	990
500	1205	955

*Consult Sales for Higher & Lower Temps.

BILL OF MATERIALS						
* - Denotes an Optional, Non-Standard Material						
No.	Name of Part	Qty.	Material	Max. Temp. (°F)	Material Grade	
Wetted	011	Body	1	Electro-Galvanized Zinc Plated Carbon Steel	ASTM A216 WCB	
				316SS	ASTM A351 CF8M	
	007	Gasket	2	Neoprene	250	
				Gylon®	500	Gylon® 3545
				*EPDM	250	
				*Viton®	350	
				*Graphite	500	
				*Non Asbestos	500	
	048	Lens	2	Tempered Boro.	500	
	008	Cushion	2	Non-Asbestos	500	
Non-Wetted	001	Retainer	2	Electro-Galvanized Zinc Plated Carbon Steel	ASTM A516 Gr.70	
				*316SS	ASTM A240	
	137	Stud	Var.	Yellow Zinc Plated Steel		ASTM A354-BD
				*316SS		ASTM A193-B8M-CL2
	004	Nut	Var.	Yellow Zinc Plated Steel		ASTM A194-2H
*316SS					ASTM A194-8M	
163	Name Plate	1	304SS		Not Pictured (Wired to Unit)	

Bi-Directional Flow



Flange Conn. Per ASME B16.5 600# RF

PRODUCT SPECIFICATIONS									
Flange Size	A		B		C ₂		Weight		# of Bolts
	In.	mm.	In.	mm.	In.	mm.	lbs.	kg.	
1/2 & 3/4	6-1/4	159	1	25	5-1/4	133	9-1/2	4.3	4
1	7-1/4	184	1-1/4	32	5-3/4	146	17	7.7	4
1-1/2	7-7/8	200	2	51	5-7/8	149	24	10.9	4
2	9	229	2	51	8-1/8	206	35	15.9	4
2-1/2 & 3	11-3/4	298	3-3/16	81	11-5/8	295	64	29.0	4
4	14-1/4	362	4-1/2	114	14-1/4	362	135	61.2	4
6	23-3/8	594	5-1/2	140	19-1/8	486	260	117.9	12
8	25-1/4	641	5-1/2	140	21-7/16	545	350	158.8	12

Notes:

1. Fused & Dual Glass Options are also Available
2. Standard Bolt Length for "C" Dimension (±1/8")
3. Carbon Steel & 316SS Bodies Conform to NACE MR0175 for Wetted NACE Service
4. For 6" & 8", maximum pressure is 800PSI, maximum temperature is 500°F depending on gasket material

S16F Series Configuration Choices:

Reference the Series S16F Model Number Matrix on our Website or Inquire with our Sales Team

Gylon® is a Registered Trademark of Garlock Sealing Technologies
Viton® is a Registered Trademark of The Chemours Company

JOHN C. ERNST Co., INC.		www.JOHNERNST.com 21 Gail Ct. Sparta, N.J. USA	
Series S16F Sight Flow Indicator - Plain 600# Flanged			
Sheet: 1 of 1	Drawn By: WAS	Tolerances, unless otherwise noted Dec.: ± Frac.: ± Ang.: ±	
Scale: NTS	Approved By: GEW	Size: A	
Dim.: Var.	Date: 30-JAN-17	Dwg. No.: SC2.0S16F.00.0.0	Rev.: B