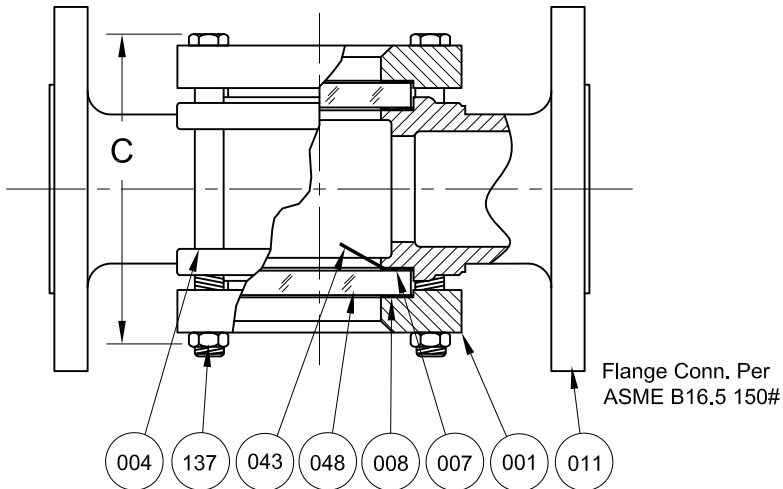
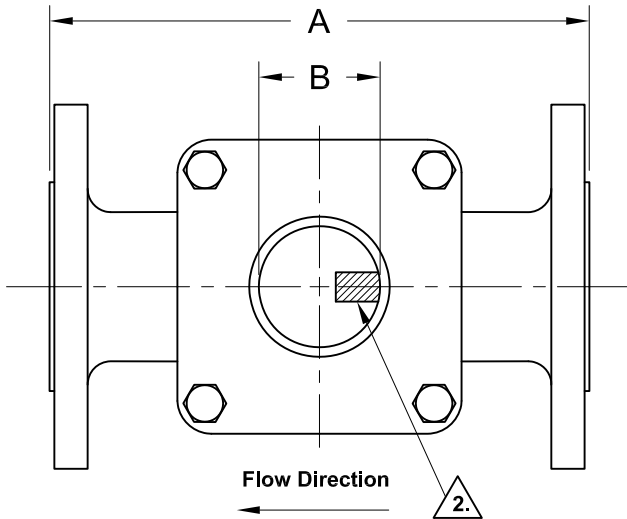


| REVISIONS | | | |
|-----------|--------------|------|---------|
| Rev. | Modification | Date | Done By |
| | | | |
| | | | |



| BILL OF MATERIALS | | | | | | |
|--|--------------|-----------------------|----------------|-----------------|-----------------|-----------------|
| * - Denotes an Optional, Non-Standard Material | | | | | | |
| No. | Name of Part | Qty. | Material | Max. Temp. (°F) | Material Grade | |
| Wetted | 011 | 1 | Carbon Steel | | ASTM A-216 WCB | |
| | | | 316SS | | ASTM A-351 CF8M | |
| | 007 | Gasket | 2 | Neoprene | 250 | |
| | | | | Gylon® | 450 | Gylon 3504 |
| | | | | *EPDM | 250 | |
| | | | | *Viton® | 350 | |
| | | | | *Graphite | 450 | |
| *Non Asbestos | | | | 450 | Klinger C-4400 | |
| | *Buna-N | 250 | | | | |
| 048 | Lens | 2 | Tempered Boro. | 450 | | |
| 043 | Flutter | 1 | PTFE | 450 | | |
| Non-Wetted | 008 | Cushion | 2 | Non-Asbestos | 450 | Klinger C-4400 |
| | 001 | Retainer ₁ | 2 | Steel | | ASTM A-216 WCB |
| | | | | 316SS | | ASTM A-351 CF8M |
| | 137 | Stud | 4 | Plated Steel | | SAE Gr. 5 |
| | | | | *316SS | | ASTM A193-B8M |
| | 004 | Nut | 4 | Plated Steel | | SAE Gr. 5 |
| *316SS | | | | | ASTM A194-8M | |

1. Retainers & Body are the Same Material

2. First Moment of Indication is Unavailable for this Unit

| PRODUCT SPECIFICATIONS | | | | | | | | | |
|------------------------|--------|-----|-------|-----|--------|-----|--------|-------|---------------|
| Flange Size | A | | B | | C | | Weight | | Rating (PSIG) |
| | In. | mm. | In. | mm. | In. | mm. | lbs. | kg. | |
| 8 | 16-1/8 | 410 | 8-1/4 | 210 | 16-7/8 | 429 | 230 | 104.3 | 150 |

*8" Units are 150 PSIG Max

S14FC Series Configuration Choices:

Reference the Series S14FC Model Number Matrix on our Website or Inquire with our Sales Team

Gylon® is a Registered Trademark of Garlock Sealing Technologies
 Viton® is a Registered Trademark of E.I. DuPont de Nemours Co. Inc.

| | | | | |
|---|----------------------------|--|---|------------|
| JOHN C ERNST LLC. | | | www.JOHNERNST.com 21 Gall Ct. Sparta, N.J. USA | |
| S14FC Sight Flow Indicator - Flutter 150# Flanged | | | | |
| Sheet 1 of 1 | Drawn By WAS | Tolerances, unless otherwise noted Dec.: ± Frac.: ± Ang.: ± | | Size: A |
| Scale: NTS | Approved By: JCW | | | |
| Date: 09-SEP-16 | Dwg. No.: SC2.S14FC.03.1.0 | | | Rev. -- |