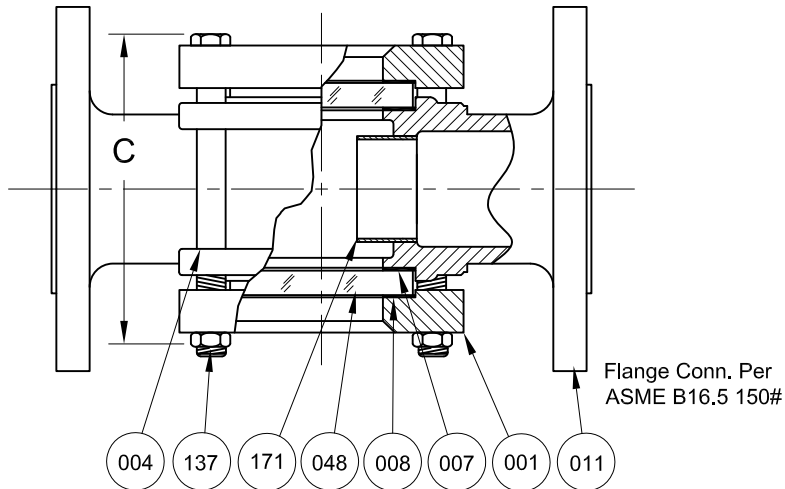
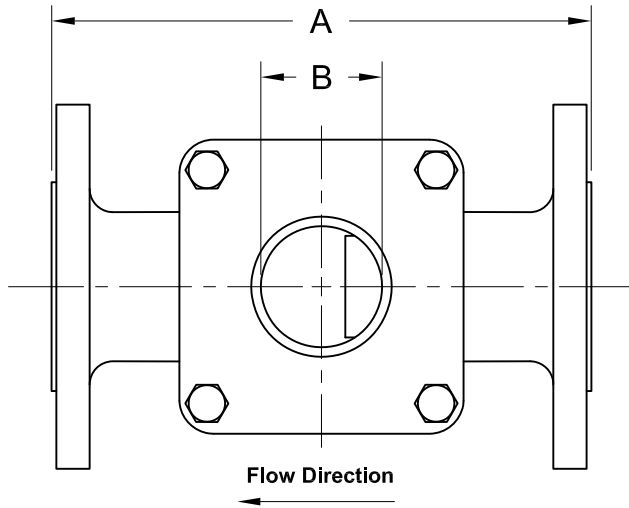


REVISIONS			
Rev.	Modification	Date	Done By



BILL OF MATERIALS					
* - Denotes an Optional, Non-Standard Material					
No.	Name of Part	Qty.	Material	Max. Temp. (°F)	Material Grade
011	Body	1	Carbon Steel		ASTM A-216 WCB
			316SS		ASTM A-351 CF8M
007	Gasket	2	Neoprene	250	
			Gylon®	500	Gylon® 3504
			*EPDM	250	
			*Viton®	350	
			*Graphite	500	
			*Non Asbestos	500	Klinger C-4400
			*Buna-N	250	
048	Lens	2	Tempered Boro.	500	
171	Indicator (Drip Tube)	1	316SS		
008	Cushion	2	Non-Asbestos	500	Klinger C-4400
			Steel		ASTM A-216 WCB
			316SS		ASTM A-351 CF8M
			Plated Steel		SAE Gr. 5
			*316SS		ASTM A193-B8M
137	Stud	4	Plated Steel		SAE Gr. 5
			*316SS		ASTM A193-B8M
004	Nut	4	Plated Steel		SAE Gr. 5
			*316SS		ASTM A194-8M

1. Retainers & Body are the Same Material

PRODUCT SPECIFICATIONS									
Flange Size	A		B		C		Weight		Rating (PSIG)
	In.	mm.	In.	mm.	In.	mm.	lbs.	kg.	
8	16-1/8	410	8-1/4	210	16-7/8	429	230	104.3	150

*8" Units are 150 PSIG Max

S14FC Series Configuration Choices:

Reference the Series S14FC Model Number Matrix on our Website or Inquire with our Sales Team

Gylon® is a Registered Trademark of Garlock Sealing Technologies
 Viton® is a Registered Trademark of E.I. DuPont de Nemours Co. Inc.

JOHN C ERNST LLC.			www.JOHNERNST.com 21 Gall Ct. Sparta, N.J. USA	
Series S14FC Sight Flow Indicator - Drip Tube - 150# Flanged				
Sheet 1 of 1	Drawn By WAS	Tolerances, unless otherwise noted Dec.: ± Frac.: ± Ang.: ±		Size: A
Scale: NTS	Approved By: JCW			
Date: 09-SEP-16	Dwg. No.: SC2.S14FC.04.1.0			Rev. --