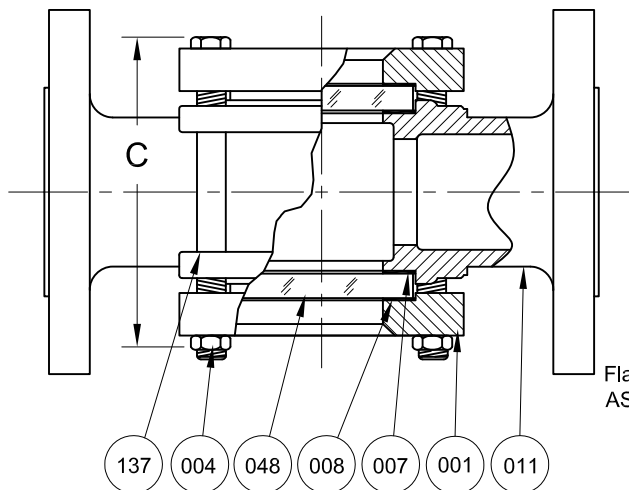
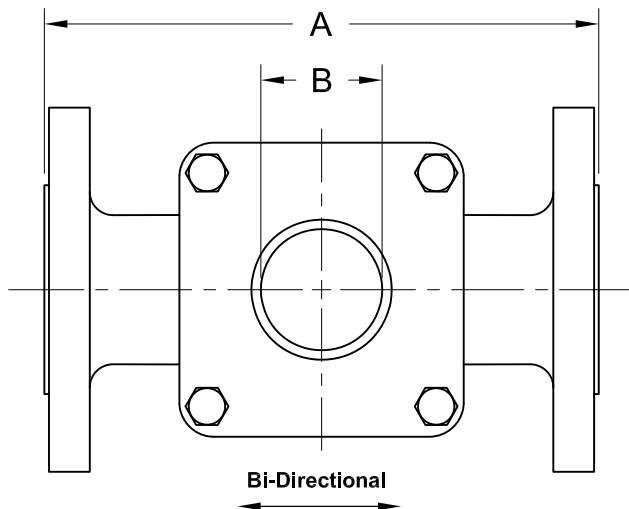


REVISIONS			
Rev.	Modification	Date	Done By



BILL OF MATERIALS						
* - Denotes an Optional, Non-Standard Material						
No.	Name of Part	Qty.	Material	Max. Temp. (°F)	Material Grade/Notes	
Wetted	011	1	Carbon Steel		ASTM A-216 WCB	
			316SS		ASTM A-351 CF8M	
	007	Gasket	2	Neoprene	250	
				Gylon®	500	Gylon® 3504
				*EPDM	250	
				*Viton®	350	
				*Graphite	500	
	*Non Asbestos	500	Klinger C-4400			
	*Buna-N	250				
048	Lens	2	Tempered Boro.	500		
Non-Wetted	008	Cushion	2	Non-Asbestos	500	Klinger C-4400
	001	Retainer <sub>1</sub>	2	Steel		ASTM A-216 WCB
				316SS		ASTM A-351 CF8M
	137	Stud	4	Plated Steel		SAE Gr. 5
				*316SS		ASTM A193-B8M
004	Nut	4	Plated Steel		SAE Gr. 5	
			*316SS		ASTM A194-8M	

1. Retainers & Body are the Same Material

PRODUCT SPECIFICATIONS									
Flange Size	A		B		C		Weight		Rating (PSIG)
	In.	mm.	In.	mm.	In.	mm.	lbs.	kg.	
8	23	584	6-7/8	175	16-1/4	413	250	113.4	300

\*8" Units are 300 PSIG Max

**S16FC Series Configuration Choices:**

Reference the Series S16FC Model Number Matrix on our Website or Inquire with our Sales Team

Gylon® is a Registered Trademark of Garlock Sealing Technologies  
 Viton® is a Registered Trademark of E.I. DuPont de Nemours Co. Inc.

<b>JOHN C ERNST LLC.</b>			www.JOHNERNST.com 21 Gall Ct. Sparta, N.J. USA	
Series S16FC Sight Flow Indicator - Plain 300# Flanged				
Sheet 1 of 1	Drawn By WAS	Tolerances, unless otherwise noted Dec.: ±    Frac.: ±    Ang.: ±		Size: A
Scale: NTS	Approved By JCW			
Date: 30-NOV-16	Dwg. No.: SC2.S16FC.00.1.0			Rev. --