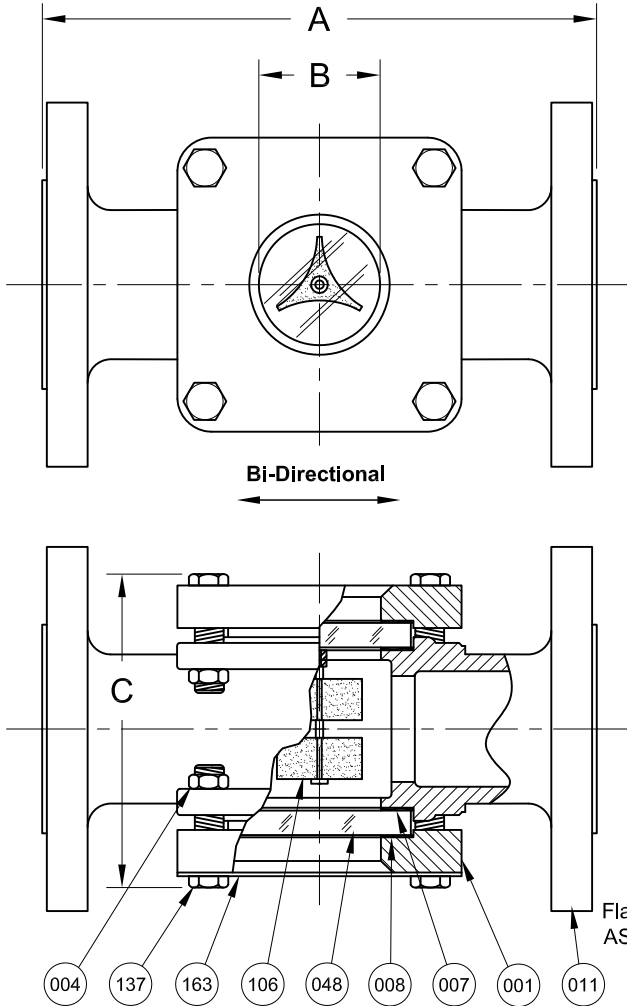


REVISIONS			
Rev.	Modification	Date	Done By
0	Original	9/8/2016	WAS
A	Nameplate Information, Added Notes on Nuts & NACE	2/3/2017	WAS
B	Added Min. & Max. Indicator Flow Rate	2/16/2018	WAS



ASME CLASS 300 SERVICE PRESSURE/TEMP. RATINGS

*Limited to Gasket & Glass Material

Temp. (°F)	Pressure (PSIG)	
	CS	316SS
-20 to 100	740	720
150	710	670
200	680	620
250	665	590
300	655	560
350	645	535
400	635	515
450	620	495
500	605	480

*Consult Sales for Higher & Lower Temps.

Flange Conn. Per ASME B16.5 300#

BILL OF MATERIALS

* - Denotes an Optional, Non-Standard Material

No.	Name of Part	Qty.	Material	Max. Temp. (°F)	Material Grade/Notes
011	Body	1	Carbon Steel		ASTM A-216 WCB
			316SS		ASTM A-351 CF8M
007	Gasket	2	Neoprene	250	
			Gylon®	500	Gylon® 3504
			*EPDM	250	
			*Viton®	350	
			*Graphite	500	
			*Non Asbestos	500	Klinger C-4400
048	Lens	2	Tempered Boro.	500	
106	Rotor Assembly	1	PTFE/316SS	500	
008	Cushion	2	Non-Asbestos	500	Klinger C-4400
001	Retainer ₁	2	Steel		ASTM A-216 WCB
			316SS		ASTM A-351 CF8M
137	Stud	8	Plated Steel		SAE Gr. 5
			*316SS		ASTM A193-B8M
004	Nut ₂	8	Plated Steel		SAE Gr. 5
			*316SS		ASTM A194-8M
163	Nameplate	1	SS		

PRODUCT SPECIFICATIONS

Flange Size	A		B		C		Weight		1st Rate of Indication GPM	Max Flow Rate GPM
	In.	mm.	In.	mm.	In.	mm.	lbs.	kg.		
1/2	5-7/8	149	1-1/4	32	4-3/16	106	9	4.1	1.0	8.5
3/4	5-7/8	149	1-1/4	32	4-3/16	106	9	4.1	1.9	14.8
1	6-7/8	175	1-1/4	32	4-1/2	114	12	5.4	2.2	24.3
1-1/2	7-1/2	191	1-3/4	44	5-7/8	149	19	8.6	5.0	57.1
2	8-5/8	219	2	51	6-3/8	162	30	13.6	7.0	94.4
3	11-3/8	289	3-3/16	81	8-3/8	213	62	28.1	10.0	207.7
4 ₂	13-1/4	337	4-3/8	111	12-1/4	311	84	38.1	12.0	357.8
6 ₂	21-3/8	543	6-7/8	175	14-3/4	375	162	73.5	14.5	649.0

KEY NOTES:

1. Retainers & Body are the Same Material
2. For 4" & 6" Sizes, Studs Thread Directly to Body (No Nuts)
3. For NACE Compliance, Please Inquire

S16FC Series Configuration Choices:

Reference the Series S16FC Model Number Matrix on our Website or Inquire with our Sales Team

Gylon® is a Registered Trademark of Garlock Sealing Technologies
Viton® is a Registered Trademark of The Chemours Company

JOHN C ERNST LLC.		www.johnernst.com 21 Gail Ct. Sparta, N.J. USA	
Series S16FC Sight Flow Indicator - Rotor 300# Flanged			
Sheet 1 of 1	Drawn By WAS	Tolerances, unless otherwise noted Dec.: ± Frac.: ± Ang.: ±	Size: A
Scale: NTS	Approved By: GEW		
Date: 16-FEB-18	Dwg. No.: SC2.S16FC.01.0.0		Rev.: B